

**vtech**<sup>®</sup>

Instruction Manual

# Kidi DJ MIX



**VTech understands that a child's needs and abilities change as they grow and with that in mind we develop our toys to teach and entertain at just the right level...**

## **vtech** *Baby*

**Toys that will stimulate their interest in different textures, sounds and colours**

### **I am...**

...responding to colours, sounds and textures

...understanding cause and effect

...learning to touch, reach, grasp, sit-up, crawl and toddle

*Birth-36 months*



## **Pre-School**

**Interactive toys to develop their imagination and encourage language development**

### **I want...**

...to get ready for school by starting to learn the alphabet and counting

...my learning to be as fun, easy and exciting as can be

...to show my creativity with drawing and music so my whole brain develops

*3-6 years*



## **Electronic Learning Computers**

**Cool, aspirational and inspiring computers for curriculum related learning**

### **I need...**

...challenging activities that can keep pace with my growing mind

...intelligent technology that adapts to my level of learning

...National Curriculum based content to support what I'm learning at school

*4-10 years*



To learn more about this and other VTech® products, visit [www.vtech.co.uk](http://www.vtech.co.uk)

# INTRODUCTION

Thank you for purchasing **Kidi DJ Mix**. Get in the DJ booth and create your own custom music mixes! Customise the 15 included songs or play along with your own music (external music player not included). Jam, scratch and mix it up – you're the star!



- |                                    |                              |   |
|------------------------------------|------------------------------|---|
| <b>1</b> Vocal Track Button        | <b>9</b> Audio-Out Jack      | <b>17</b> Custom Sound Effects Buttons        |
| <b>2</b> Line-In Button            | <b>10</b> AC Adaptor Jack    | <b>18</b> Selection Buttons (Left, Right, OK) |
| <b>3</b> Bluetooth® Input Button   | <b>11</b> Line-In Jack       | <b>19</b> Party Light On/Off Switch           |
| <b>4</b> Bluetooth® Connect Button | <b>12</b> Mode Buttons       | <b>20</b> Party Light Mode Button             |
| <b>5</b> Power Button              | <b>13</b> Style Button       | <b>21</b> Volume Control                      |
| <b>6</b> Turntable                 | <b>14</b> Sound Grid Buttons | <b>22</b> Crossfader                          |
| <b>7</b> Pause Button              | <b>15</b> Preset SFX Buttons | <b>23</b> Tempo Buttons                       |
| <b>8</b> Turntable Effect Buttons  | <b>16</b> Microphone         |   |

# INCLUDED IN THE PACKAGE

- Kidi DJ Mix
- Quick Start Guide

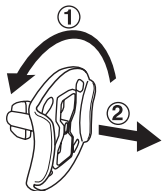
## WARNING

All packing materials such as tape, plastic sheets, packaging locks, removable tags, cable ties, cords and packaging screws are not part of this toy, and should be discarded for your child's safety.

## NOTE

Please save this Instruction Manual as it contains important information.



## Removing the Packaging Locks



- ① Rotate the packaging locks 90 degrees anticlockwise.
- ② Pull out the packaging locks.

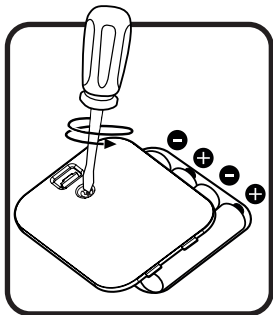
# GETTING STARTED

## NOTE

This product is in Try-me mode in the packaging. In DJ Party mode , press and hold **Custom Sound Effect Button #5**  for three seconds to exit Try-Me mode. If the unit powers down during play, please install a new set of batteries.

## Battery Removal and Installation

1. Make sure the unit is turned **Off**.
2. Find the battery cover located on the back of the unit, use a screwdriver to loosen the screw and then open the battery cover.
3. Remove old batteries by pulling up on one end of each battery.
4. Install 4 new AA (AM-3/LR6) batteries following the diagram inside the battery box. (For best performance, alkaline batteries or fully charged Ni-MH rechargeable batteries are recommended).
5. Replace the battery cover and tighten the screw to secure.



## WARNING:

Adult assembly required for battery installation.  
Keep batteries out of reach of children.

# BATTERY NOTICE

- Insert batteries with the correct polarity (+ and -).
- Do not mix old and new batteries.
- Do not mix alkaline, standard (carbon-zinc) or rechargeable batteries.
- Only batteries of the same or equivalent type as recommended are to be used.
- Do not short-circuit the supply terminals.
- Remove batteries during long periods of non-use.
- Remove exhausted batteries from the toy.
- Dispose of batteries safely. Do not dispose of batteries in fire.

## **RECHARGEABLE BATTERIES:**

- Remove rechargeable batteries (if removable) from toy before charging.
- Rechargeable batteries are only to be charged under adult supervision.
- Do not charge non-rechargeable batteries.

## Disposal of batteries and product



The crossed-out wheeled bin symbols on products and batteries, or on their respective packaging, indicates they must not be disposed of in domestic waste as they contain substances that can be damaging to the environment and human health.

The chemical symbols Hg, Cd or Pb, where marked, indicate that the battery contains more than the specified value of mercury (Hg), cadmium (Cd) or lead (Pb) set out in the Batteries and Accumulators Regulation.



The solid bar indicates that the product was placed on the market after 13th August, 2005.



Please dispose of your product and batteries responsibly.

In the UK, give this toy a second life by disposing of it at a small electricals collection point\* so all of its materials can be recycled.

Learn more at:

[www.vtech.co.uk/recycle](http://www.vtech.co.uk/recycle)

[www.vtech.com.au/sustainability](http://www.vtech.com.au/sustainability)

\* Visit [www.recyclenow.com](http://www.recyclenow.com) to see a list of collection points near you.

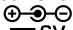
# POWER ADAPTOR CONNECTION

- Make sure your **Kidi DJ Mix** is turned off.
- Locate the **AC Adaptor Jack** on the side of the unit.
- Connect an AC adaptor (not included) to the **AC Adaptor Jack**.
- Plug the adaptor into a power outlet.
- Press the **Power Button** to turn the system **On**.

**Note:** When the toy is not going to be used for an extended period of time, unplug the adaptor.

## Safety information when using power supply for toys

VTech recommend a power supply (AC/DC adaptor) of the below specification:

AC-DC adaptor, output voltage: 6V, output current: 800mA or above, with 3.5mm/1.35mm plug, (positive centre). 

- This toy shall only be used with a power supply for toys.
- The power supply is not a toy.
- This toy is not intended for use by children under 3 years old.
- Do not connect the toy to more than the recommended number of power supplies.
- Never clean a plugged in toy with liquid.
- Please examine the power supply periodically for conditions that may result in the risk of fire, electric shock, or injury to persons (such as damage to the supply cord, output cord, plug, blades, housing, or other parts) and that, in the event of such conditions, the power supply should be scrapped.
- Power supplies for toys are not intended to be used as toys, and the use of these products by children shall be under the full supervision of parents.



# PRODUCT FEATURES

## 1. Power Button

Press the **Power Button** to power **On** the unit. Press the button again to power **Off** the unit.



## 2. Line-In Jack

Connect an external music player here using a 3.5mm cable (cable and music player not included).



## 3. Audio-Out Jack

Connect the mixer to external speakers or headphones using the **Audio-Out Jack** (cable not included).



## 4. AC Adaptor

Connect the mixer to AC power (adaptor not included).



## 5. Automatic Shut-Off

To preserve battery life, **Kidi DJ Mix** will automatically turn off after 10 minutes without input. The unit can be turned on again by pressing the **Power Button**.

# Modes

## DJ Party

Create custom mixes with any of the 15 built-in tracks, adjusting all aspects of each song, or play along with your own music.

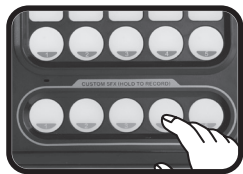


## Audio Controls

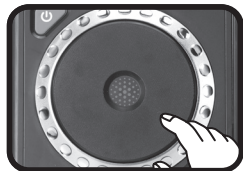
- Use the **Sound Grid Buttons** to choose different instruments to play. Each column triggers one instrument at a time.
- Press the **Preset Sound Effects Buttons** to play built-in sound effects.
- Press the **Style Button** to change the track's style. The **Sound Grid Buttons** and **Preset Sound Effects Buttons** will adjust what they play accordingly.



- Press and hold any of the **Custom Sound Effect Buttons** to record your own short sound effect and assign it to one of the five buttons. When the button lights up, it is recording. Release the button when you're finished recording. Press the button again to hear your custom sound effect.



- Scratch the **Turntable** back and forth to add scratching effects to your music. Press a **Turntable Effect Button** to change the sound effect the turntable makes.



- Press the **Vocal Track Button** to add or remove singing from the mix for all built-in songs.



- Press the **Line-In Button** to play audio from a device plugged in to the **Line-In Jack** (external music player and cable not included).



- Press the **Bluetooth® Connect Button** to connect to a nearby device via *Bluetooth®* connection. Once the device is paired, press the **Bluetooth® Input Button** to choose this as the audio input source.



#### NOTE

If your music device does not support a PIN code connection, you can disable the PIN by pressing the selection buttons.

Please use the PIN-secured connection when possible. VTech® strongly recommends keeping the PIN security on for the use of *Bluetooth®* transmission to avoid any connection by an unauthorized device. The disabling of the PIN security should only be used when the connection of an external device with PIN security is impossible. The use of the toy when PIN security has been disabled should be under the supervision of an adult.

- Use the **Crossfader** to adjust the volume balance between your selected audio source and the system's built-in sounds.



#### NOTE

When playing audio wirelessly through the system, we suggest you only adjust your smart device's volume using the **Crossfader** on the **Kidi DJ Mix** system. For best performance, set your device's volume to 100% with the **Crossfader** in the middle position to get started.

- Use the **Tempo Control Buttons** to adjust the tempo of built-in audio tracks.



- Press the **Pause Button** to pause or resume the music.



- Use the **Volume Control Slider** to adjust the overall system volume.



## Party Light Control

Use the **Party Light On/Off Button** to switch the light on or off.



## Studio

In **Studio** mode you can either record or play back tracks using the **Left**, **Right**, and **OK Buttons**.



## Record

Press the **OK Button** to enter record mode and select one of the three slots you would like to save your mix. After a countdown, recording will begin. The system will record the sound from the **Turntable, Vocal Track, Sound Grid Buttons**, preset and custom sound effects (see **note** below), **Crossfader** actions and tempo changes. When you finish recording, press the **OK Button** to save your mix.



## NOTE

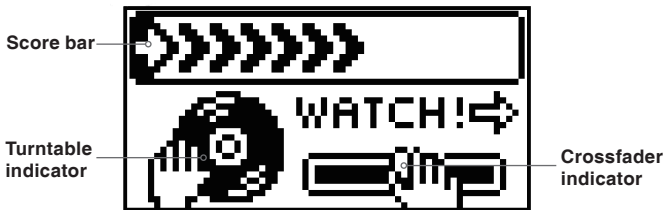
If you create new custom sound effects at a later time, when you play back tracks recorded earlier, any custom sound effects in the original recordings will trigger the system's current custom effects.

## Playback

Choose the track you would like to play with the **Left**, **Right** and **OK Buttons**.

## Academy

See how well you can repeat the patterns. When you play back a rhythm with 75% or more notes correct, your score at the top of the screen will increase. The patterns include the **Crossfader** and **Turntable** controls as well: watch the screen to see when they're indicated. A total of 11 patterns will appear in each game. Get nine or more patterns correct to unlock secret animations.



## CARE & MAINTENANCE

1. Keep the unit clean by wiping it with a slightly damp cloth.
2. Keep the unit out of direct sunlight and away from any direct heat source.
3. Remove the batteries when the unit will not be in use for an extended period of time.
4. Do not drop the unit on hard surfaces and do not expose the unit to moisture or water.

## TROUBLESHOOTING

If there is a pairing problem with your *Bluetooth*<sup>®</sup> device, please follow these steps:

On your *Bluetooth*<sup>®</sup> device, please go to *Bluetooth*<sup>®</sup> settings. If “DJ Mixer” is found in your list of connected, paired or saved devices, please “forget” or “unpair” it. Then, disable and enable *Bluetooth*<sup>®</sup> or restart your device. Finally, turn the DJ Mixer off and on and repeat the *Bluetooth*<sup>®</sup> pairing process. Please also ensure the DJ Mixer is not in Try-me mode before attempting to pair to *Bluetooth*<sup>®</sup>.

If for some reason the program/activity stops working or malfunctions, please follow these steps:

1. Please turn the unit **OFF**.
2. Interrupt the power supply by removing the batteries.
3. Let the unit stand for a few minutes, then replace the batteries.
4. Turn the unit **ON**. The unit should now be ready to play with again.
5. If the unit still does not work, install a brand new set of batteries.

If the problem persists, please contact our Consumer Services Department and a service representative will be happy to help you.



## **Bluetooth® Statement**

The *Bluetooth®* word mark and logos are registered trademarks owned by the Bluetooth SIG, Inc. and any use of such marks by VTech® is under license. Other trademarks and trade names are those of their respective owners.

## **DECLARATION OF CONFORMITY**

Hereby, VTech Electronics Europe Plc (UK) declares that the radio equipment type 5473 is in compliance with The Radio Equipment Regulations 2017 (2017 No.1206). The full text of the Declaration of conformity is available at the following internet address:  
[www.vtech.com/re-directive](http://www.vtech.com/re-directive)

Frequency Band: 2402MHz – 2480MHz

Maximum RF power: 1.6mW (2dBm)



## Important Additional Instructions:

Ecodesign Information	(EU) 2023/826 amending Regulation (EC) No. 1275/2008
Manufacturer's name	VTECH
Product type	Toy
Model No.	5473
Power consumption in standby mode (Watt)	0.2 W
Default time to switch to standby mode (minutes)	10 minutes
Adaptor Information	AC/DC adaptor, Conform to the ERP norm, DC output 6V/800mA

# CONSUMER SERVICES

Creating and developing VTech® products is accompanied by a responsibility that we at VTech® take very seriously. We make every effort to ensure the accuracy of the information, which forms the value of our products. However, errors sometimes can occur. It is important for you to know that we stand behind our products and encourage you to call our Consumer Services Department with any problems and/or suggestions that you might have. A service representative will be happy to help you.

## **UK Customers:**

Phone: 0330 678 0149 (from UK) or +44 330 678 0149 (outside UK)  
Website: [www.vtech.co.uk/support](http://www.vtech.co.uk/support)

## **Australian Customers:**

Phone: 1800 862 155  
Website: [support.vtech.com.au](http://support.vtech.com.au)

## **NZ Customers:**

Phone: 0800 400 785  
Website: [support.vtech.com.au](http://support.vtech.com.au)

# PRODUCT WARRANTY/ CONSUMER GUARANTEES

## **UK Customers:**

Read our complete warranty policy online at [vtech.co.uk/warranty](http://vtech.co.uk/warranty).

## **Australian Customers:**

VTECH ELECTRONICS (AUSTRALIA) PTY LIMITED – CONSUMER GUARANTEES

Under the Australian Consumer Law, a number of consumer guarantees apply to goods and services supplied by VTech Electronics (Australia) Pty Limited. Please refer to [vtech.com.au/consumerguarantees](http://vtech.com.au/consumerguarantees) for further information.

**Visit our website for more  
information about our products,  
downloads, resources and more.**

***[www.vtech.co.uk](http://www.vtech.co.uk)***  
***[www.vtech.com.au](http://www.vtech.com.au)***

